

**NWI**  
GROUP

**NWI** Weighbridges

# Install Timeline Guide For a Centurion Automated Weighbridge System



**1300 669 162**

[www.nwigroup.com.au](http://www.nwigroup.com.au) | [www.nwiweighbridges.com.au](http://www.nwiweighbridges.com.au)

**World-class precision,  
locally delivered.**

**CAU**  
MOVING LIFE

# Day 0

---

## Three Technicians Required

- Unloading the weighbridge decks off the truck and placing them in order on-site.
- Delivery of the mounting poles for the auxiliary devices and driver terminal.
- In the NWI workshop, check all loadcells, loadcell cards and digital terminal/s are communicating and working.
- Collect any consumables needed for the install (wedge anchors, nuts, bolts, screws, conduit)





# Day 1

---

## Three Technicians Required

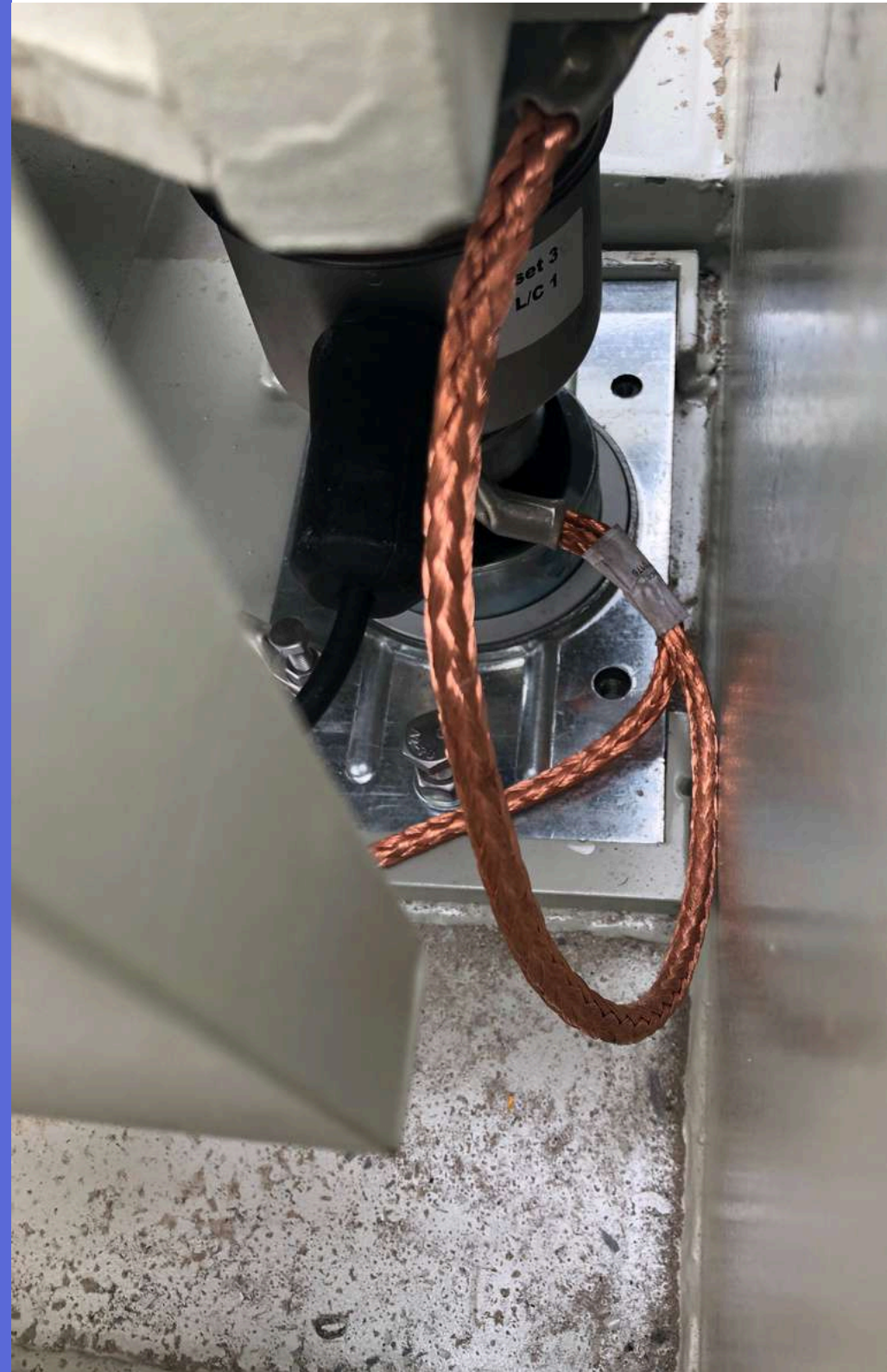
- Bolting Decks together & mounting loadcell base plates with dummies to each deck.
- Placing each deck into the pit or frame position for commissioning.
- Ensure end stop pads are installed on the base plates (if required).
- Drilling holes in each loadcell base plate for the wedge anchors to be screwed in.
- Running cable for auxiliary devices (ethernet cable, comms cable, loadcells homerun cables)
- Mounting remote displays to the pole and wiring of the power and data cable to each pole.

# Day 2

---

## Three Technicians Required

- Drilling holes in each loadcell base plate for the wedge anchors to be screwed in.
- Mounting digital loadcells to replace dummy's and run each individual loadcell cable.
- Mount of the unmanned driver terminal to the pole.
- Mount the automation and control cabinet to the pole.



# Day 3

---

## Three Technicians Required

- Wire all loadcells into the junction boxes.
- Wire homerun cables into the Driver Terminal.
- Mount the remote display pole/s.
- Mount the end position sensor pole/s.
- Mount the remote zero button pole.



# Day 4

---

## Three Technicians Required

- Run any remaining cables for the peripheral devices (ethernet/comms/traffic lights)
- Wire all the cables into the automation and control cabinet (end position sensors, traffic light, remote zero, ethernet cables for remote displays and ethernet cable from the driver terminal)
- Check the wiring of the junction boxes and automation cabinet twice against the electrical drawings to ensure no mistakes.
- Silicone junction boxes for extra IP protection (if required).

- Cable tie the Junction Boxes to the loadcell decks to ensure they sit above ground level.
- Ensure all end stop pads are screwed into loadcell base plates.
- Ensure end stop bolts are screwed in to loadcell base plates at the right distance.



# Day 5

---

## Three Technicians Required

- Power up the system and test.
- Check all functions with the system to ensure they are operational.
- Check corners on each deck to ensure the correct weighing operation.
- Check remote displays are populating each decks weight and the sum total.
- Check remote displays are in the correct display order. Deck A = Top, Deck D = Bottom
- Complete the system commissioning checklist..



# Day 6

---

## One Technician Required

- Perform the weighbridge calibration and NMI Verification with the documentation added to the commissioning documentation.







**NWI**

**Weighbridges**

**World-class precision, locally delivered.**

---

**NSW | VIC | QLD | SA | WA**

**[www.nwiweighbridges.com.au](http://www.nwiweighbridges.com.au)**

**1300 669 162**